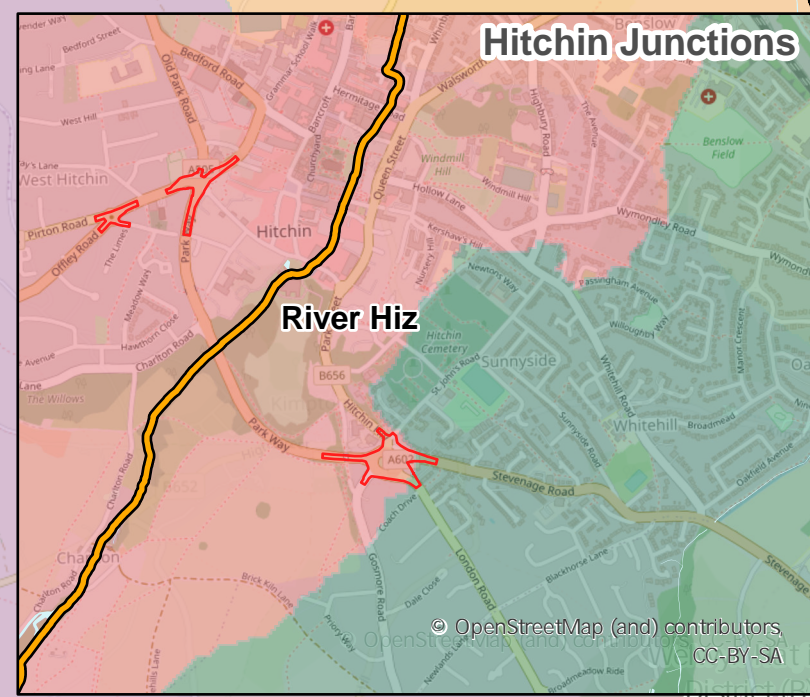
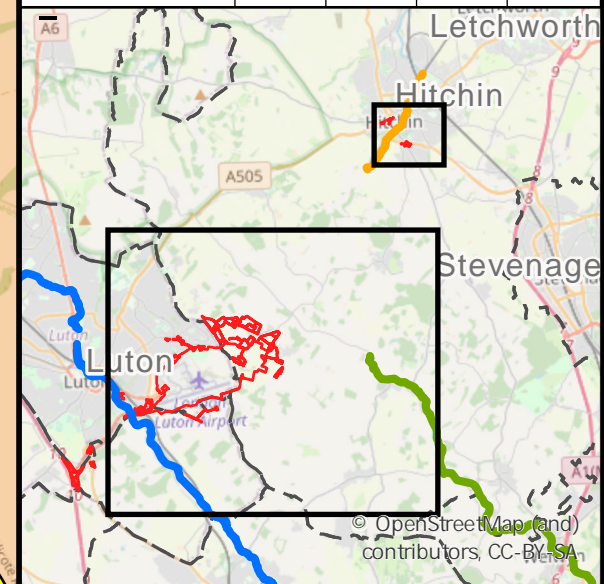


This drawing may contain mapping by permission of Ordnance Survey on behalf of HMSO © Crown Copyright and database rights 2019 Ordnance Survey 0100031673

All structure positions are indicative. The proposed works will be subject to detailed design development. The changes will be within limits of deviation specified in the Development Consent Order.

- Legend**
- Proposed Development Boundary
 - Local Authorities Boundaries
 - Surface water
- Overall Status Classification (2019 RBMP Cycle 2)**
- Moderate
 - Poor
 - Bad
- WFD surface water body catchments - Cycle 2**
- Hiz (through Hitchin)
 - Lee (from Luton Hoo Lakes to Hertford)
 - Lee (from Luton to Luton Hoo Lakes)
 - Mmram (Codicote Bottom to Lee)
 - Mmram (Whitwell to Codicote Bottom)
 - Purwell
 - Upper Colne and Ellen Brook

First Issue	AB	JR	CS	15/12/21	P01
Revision History	Drawn	Checked	Approved	Date	Rev.



Luton Rising
 Our airport. Our community. Our planet.
 Luton Rising
 Hart House Business Centre
 Kimpton Road, Luton, LU2 0LA
 www.lutonrising.org.uk

**London Luton Airport
 Development Consent Order**

Drawing Title
**Figure 20.4 Water Framework Directive
 Water Bodies**

Purpose of issue				Suitability		
SUITABLE FOR INFORMATION				S2		
Drawn	Checked	Approved	Date	Scale	Size	
AB	JR	CS	15/12/21	1:30,000	A3	
DCO Application Ref.		APFP Regulation		DCO Document Ref.		
TR020001						
Drawing Number						Revision
LLADCO-3C-ARP-0000-DR-YE-0071						P01
Project - Phase - Originator - Asset/Zone - Sub-Asset - Type - Discp. - Number						